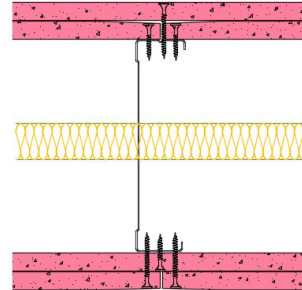


## 146-K-61(25) - SPEEDLINE System Data Sheet - Version V1 (24-10-23)

SPEEDLINE 146mm 'C' Stud Partition @600mm  
Ctrs, with 2x Knauf 12.5mm Fire Panel each side,  
25mm APR



### System Performance Breakdown

Fire Resistance:

BS476 Part 22:1987:

Test Ref & Date or Applied Ref & Report:

Max Height:

Thickness:

Duty Grade: BS 5234: Part 2:1992:

Sound Insulation:

**120/120 Minutes (Integrity/Insulation).**

**BRE-P100456-1084 - BRE Report P102396-1011B**

**Refer to Speedline Specification Clause**

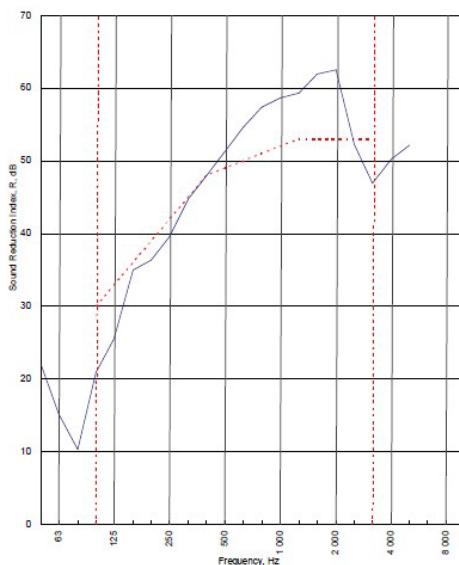
**198 mm.** (At Base Track, Excluding Finishes)

**Severe - Annexes A-F**

**49 R<sub>w</sub>dB**, Date Tested or Assessed Against - 70-K-57(25)

Test Code:  
**H17516AA**  
Test Date:  
**08/08/2011**

Freq. Hz	R dB
50	22.1
63	15.2
80	10.3
100	20.9
125	25.6
160	35.0
200	36.4
250	39.5
315	44.8
400	48.0
500	51.3
630	54.7
800	57.4
1 000	58.7
1 250	59.3
1 600	62.0
2 000	62.5
2 500	52.3
3 150	46.9
4 000	50.2
5 000	52.2
6 300	
8 000	
10 000	



Rating according to BS EN ISO 717-1:1997	<b>R<sub>w</sub> (C;Ctr) = 49 (-3;-10) dB</b>		
Evaluation based on laboratory measurement results obtained by an engineering method:	C <sub>50-3150</sub> = -8 dB	C <sub>50-500</sub> = -7 dB	C <sub>100-500</sub> = -3 dB
	C <sub>9,50-3150</sub> = -19 dB	C <sub>9,50-500</sub> = -19 dB	C <sub>9,100-500</sub> = -10 dB

TESTED AT ONE OF THE UKAS ACCREDITED LABORATORIES BELOW

- B.T.C (H-Ref on Graph)
- B.R.E
- AIRO
- S.R.L

Customer: Metsec plc Hepsec Division

BTC 17516A: Page 9 of 11

